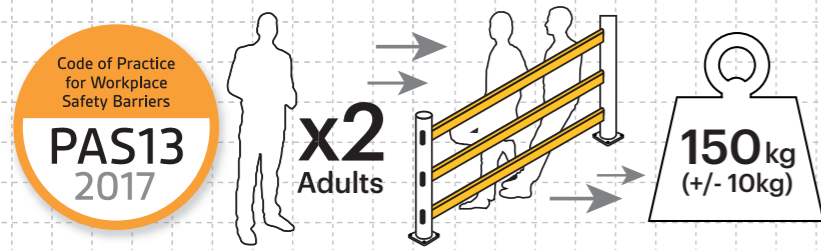
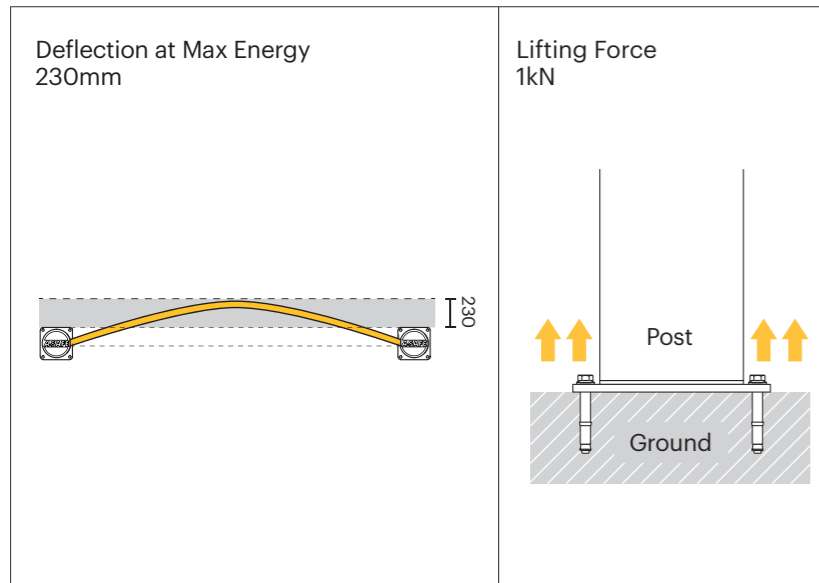
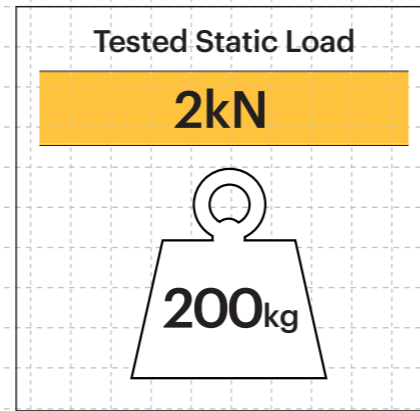


Technical Information

How the load of a pedestrian barrier is calculated

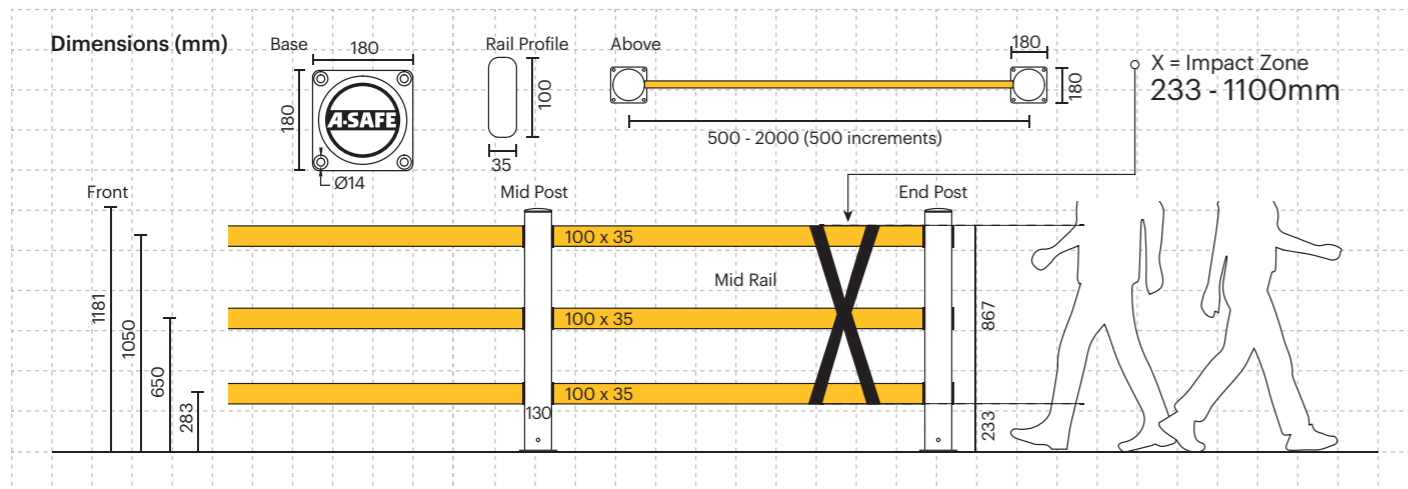


Weight of 2 x Leaning Adults =
Static Load Barrier should withstand



Material Properties	MEMAPLEX™
Temperature Range	-10°C to 50°C
Ignition Temperature	370°C to 390°C
Flash Point	350°C to 370°C
Toxicity	Not Hazardous
Chemical Resistance	Excellent - ISO/TR 10358
Weathering Stability (Grey Scale)	5/5*
Light Stability (Blue Wool Scale)	7/8**
Static Rating (Surface Resistivity)	1015 - 1016 Ω
Hygiene Seals	No

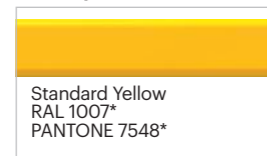
* Weathering scale 1 is very poor and 5 is excellent
** Light stability scale 1 is very poor and 8 is excellent



Post Options



Rail Options



Colour Combinations

*Please note that the RAL and PANTONE colours listed are the closest match to standard A-SAFE colours, but may not be exact matches of the actual product colour and should be used for guidance only.



Pedestrian Barrier 3 Rail

A-SAFE

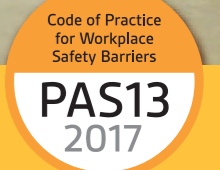
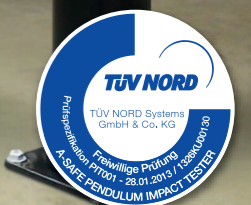
Est. 1984



Designed to guide pedestrians around a facility, restricting them to defined routes both inside and out.

The flexible, high-visibility barriers clearly outline pedestrian walkways and act as a physical barrier, ensuring visitors and personnel do not accidentally stray from safe areas.

Ideal for defining traffic flow, separating people from hazards, and equipping build base specifications.



Engineered for performance

A-SAFE's state of the art products are meticulously engineered to deliver the highest performance. Designed, developed, tested and manufactured in-house at our cutting-edge facility, each unique component is carefully crafted and purpose-built to play a vital role in the product's performance.

Advanced strength polymer created from an exclusive composition of the most sophisticated polyolefins, expertly blended for unequalled strength and flexibility.

Ultra-low maintenance material is chemical and water resistant, non-corrosive, non-scratch and self coloured so no repainting, rusting, flaking or corrosion.

Ultra simple assembly with push-on caps for a fast installation.

Ergonomic design with no sharp edges.

Environmentally friendly and 100% recyclable.

Self coloured and UV stabilised for continued visibility and long lasting aesthetics with no repainting.

Zinc nickel, electrophoretic coating on base plates as standard, provides advanced protection against corrosion damage.

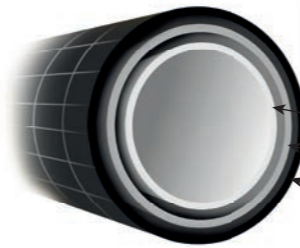
Multi-directional system creates simplified pedestrian guidance for any facility.

Exclusive modularity allows rails and posts to be replaced in-situ without removing adjacent barrier sections.

Specially designed rail insert creates snug grip at post joints and neat finish at post ends. Quick-detach feature for simple addition and reconfiguration of rails.

MEMAPLEX™

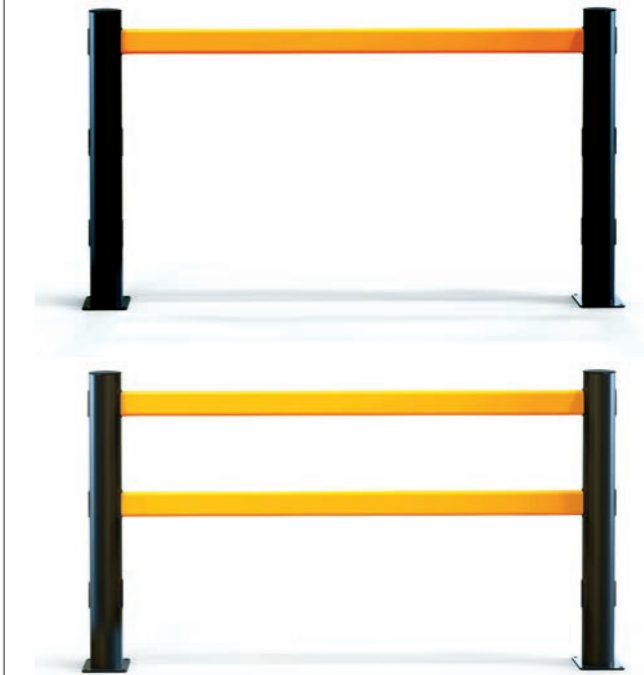
Patented Engineering
Molecular reorientation during manufacturing creates a unique built-in memory.



Revolutionary 3-Layered Material

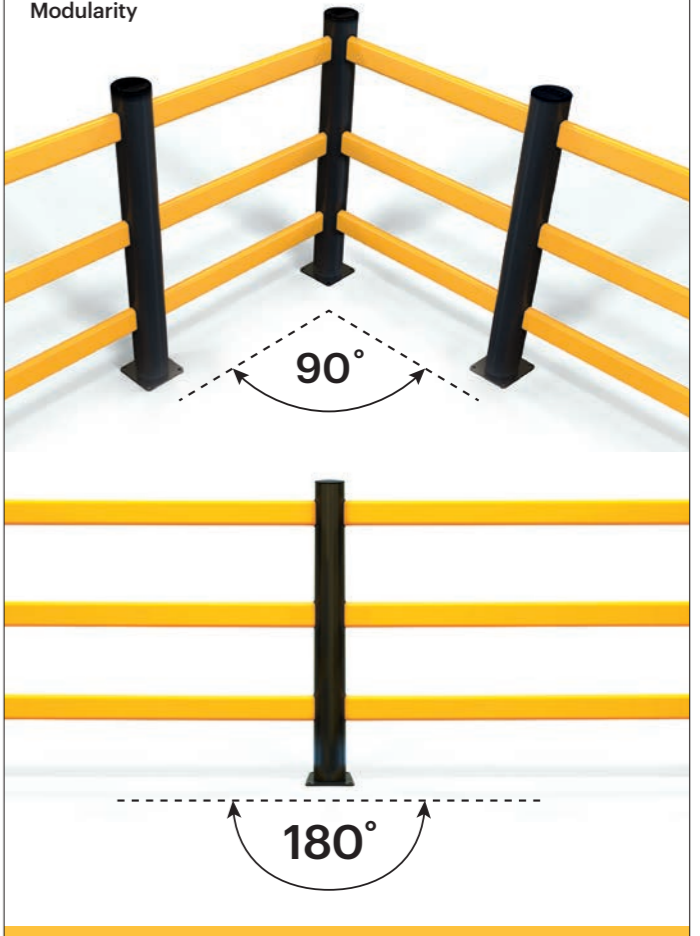
- Inner strengthening core
- Central absorption zone
- Outer UV stabilised colour layer

Rail Configurations



Multiple rail options with one, two, or three rail configurations possible at every post. Easily interchangeable to meet the pedestrian guidance needs of any facility.

Modularity



Complete modularity allows simple layout configurations to guide pedestrians along designated safe routes.